



Microtron's Fiber backbones Solutions 2021

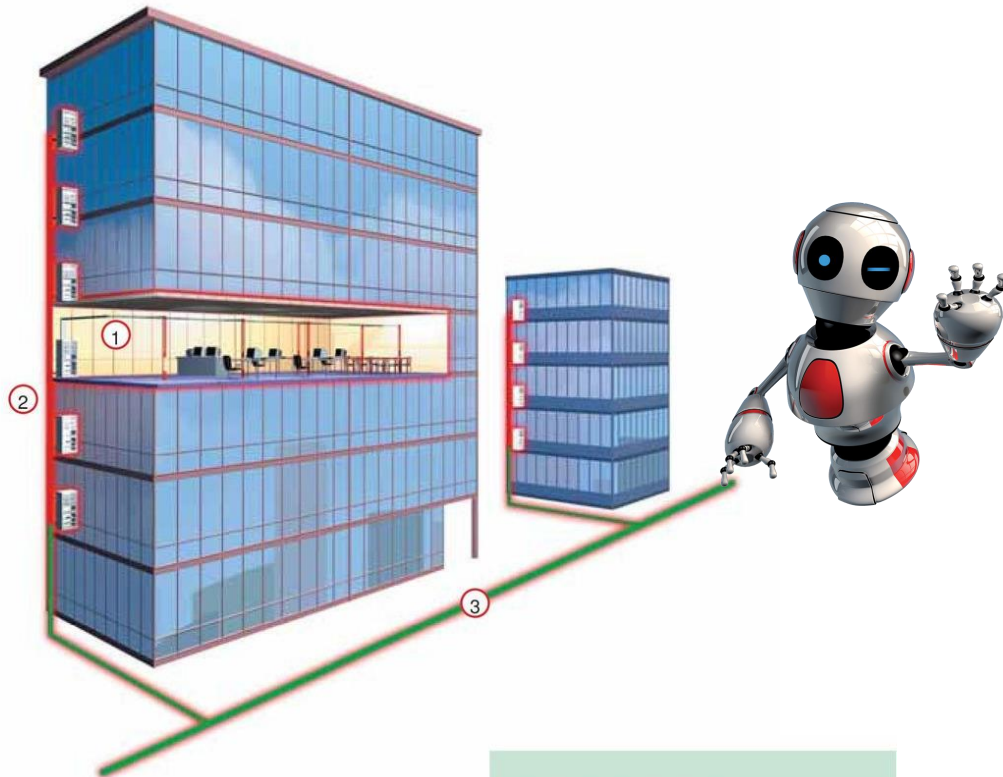
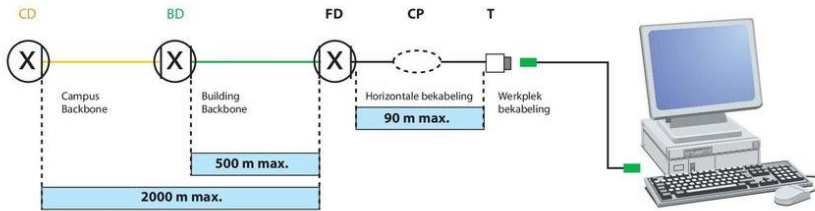
Voor Scholen en scholengroepen .

Microtron

Flexible electronic solutions

Campus backbone netwerken verbinden gebouwen in dezelfde omgeving. Dit kan een school zijn, een ziekenhuis, een woonomgeving of een groep andere gebouwen relatief dicht bij elkaar gelegen. Voor campus backbone netwerken bevelen wij het gebruik van glasvezel aan. Dit garandeert een hoge datacapaciteit en immuniteit voor interferentie. Glasvezel maakt het mogelijk om in de toekomst te voldoen aan stijgende behoefte van bandbreedte. Om hier met zekerheid aan te voldoen en om hier flexibel op in te spelen is glasvezel noodzakelijk. Voor het telefonienetwerk kan gekozen worden voor twisted-pair kabel of glasvezelkabel.

Glasvezel plaatsen



1. Horizontale netwerken
2. Building backbone netwerken
3. Campus backbone netwerken

backbone :

* Om uw serverruimte met uw 19” racks op de verdiepingen te verbinden

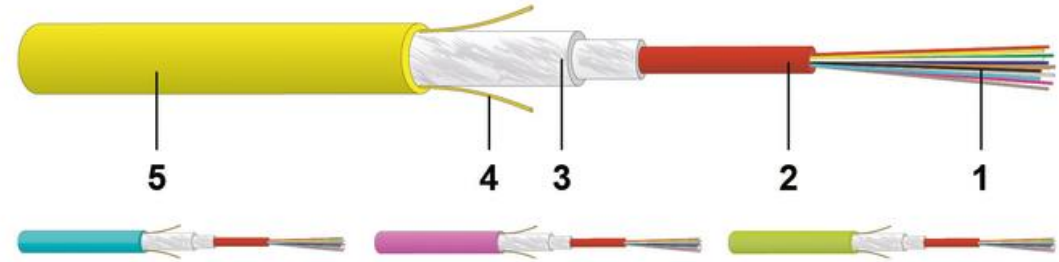
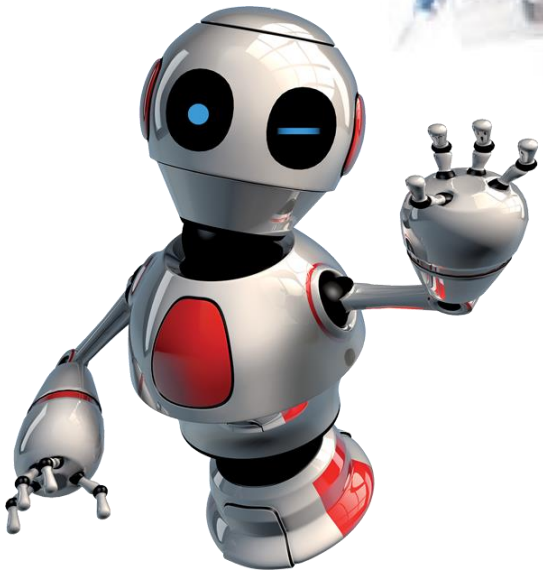
campus fibre :

* Of uw gebouwen op de campus met elkaar te verbinden .

Glasvezel geeft u de meeste mogelijkheden en is bij ons zeer betaalbaar .

Option 1 , we deliver :

- 1) Fibre cable
- 2) Pigtails and splice protectors
- 3) Fibre trays



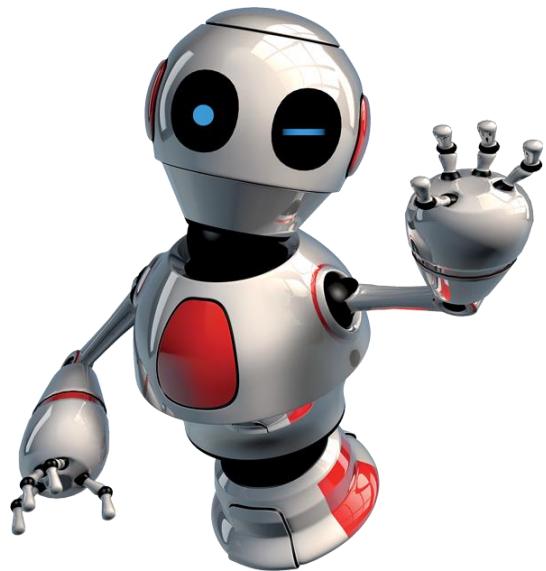
- You choose if you prefer to :
 - a) Splice the pigtails on the fibre cable yourself and rent our splicer & tester . And we train you so you can do the splicing of the pigtails on the cable yourself .
 - b) Let your usual installer splice the pigtails on the fibre cable and install fibre tray himself in the 19" rack .
 - c) Let us send someone to do the splicing and further installation of the cable in the rack .

The Most Cost Effective Panel Option Available

Fibre tray ; fully assembled with adapters :

- * multimode :
 - with 12 or 24 duplex LC connectors
 - with 12 duplex SC connectors

- * single mode :
 - with 12 or 24 duplex LC connectors
 - with 12 duplex SC connectors



19" rack available or not :

Wall-mounted



From our warehouse

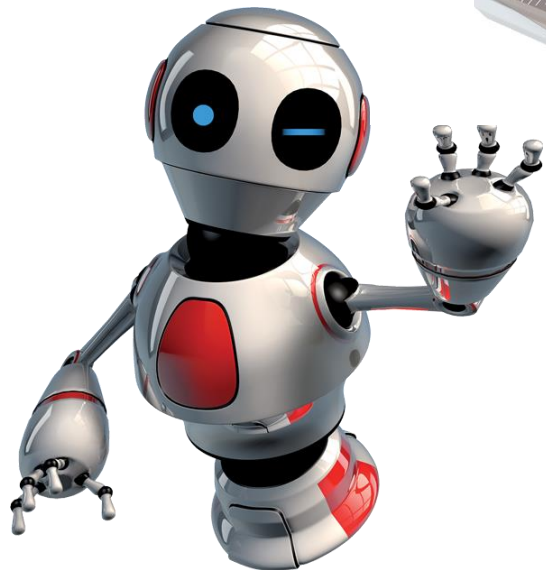
42HE :

- 800x800
- Glass door front back
door metal
- 800x1000
- perforated saloon
doors front & back
- Grey
 - Other measurements on demand .

From our warehouse

- 6 HE, 9HE, 12HE, 15HE & 18HE
- 50 cm depth
- Grey
- Other measurements on demand .

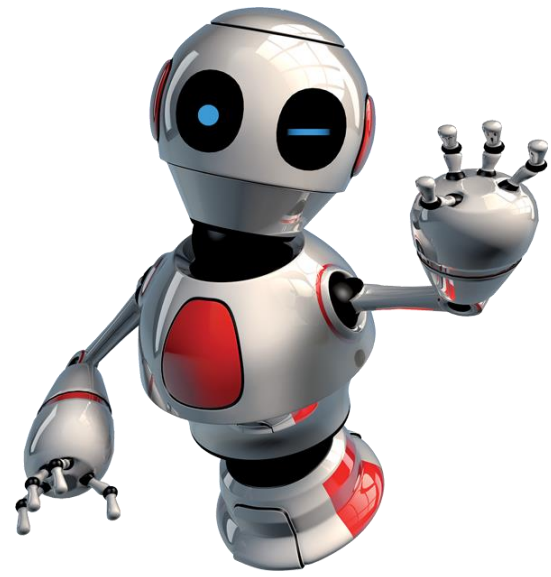
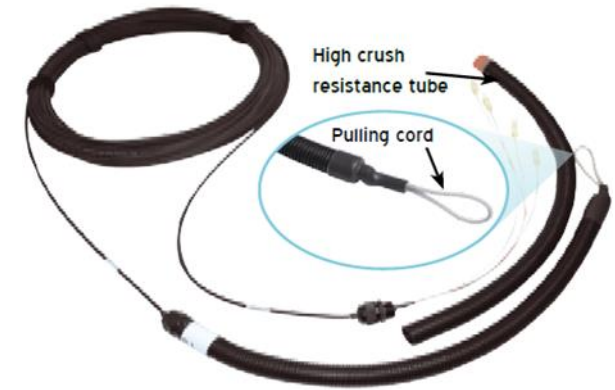
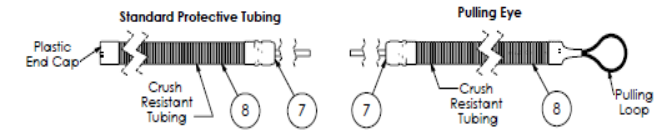
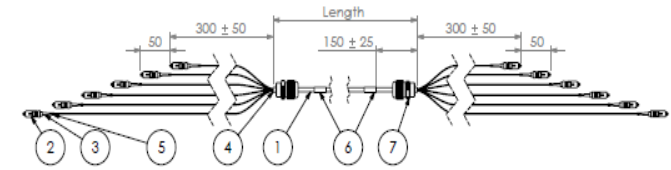
Standing :



Option 2 , we deliver :

Pre-terminated fibre assemblies complete with test report .

- You provide the measurements for the pre-terminated assembly .
- The fibre type : Multimode (OM4) of Single Mode (OS1/2),
- The number of fibres in the cable 4,8,1,24 fibres
- And the choice of connectors (LC, SC ,MTP)

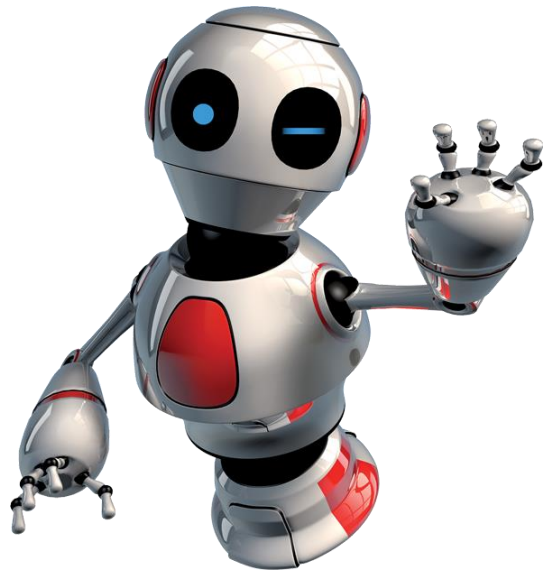


Option 3 :

We take care of the whole project :

We send someone to do the whole installation .

Turnkey project .



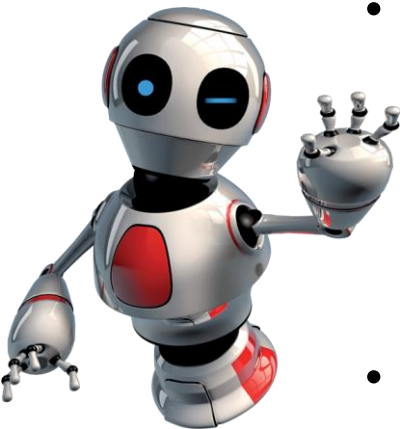
Don't forget to update your copper cabling :

Same choice of solution types :

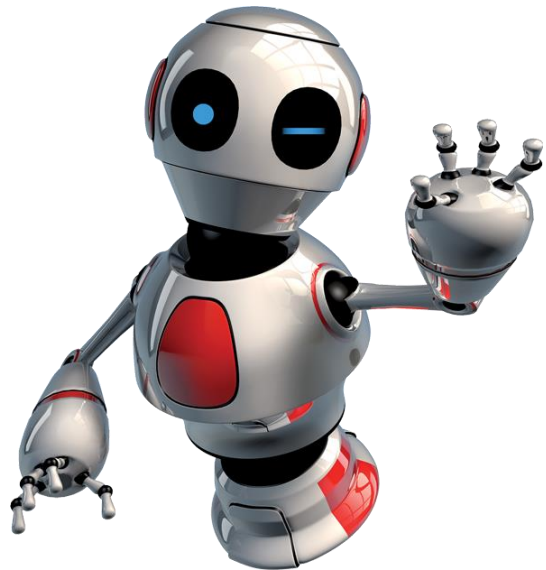
- * only delivery of products
- * products + training (Do it yourself)
- * total project .

• As a formule one racecar will not advance on a cobblestone road, make sure your outlets are connected to the panels using :

- CAT6A U/FTP because :
 - 90W PoE
 - 500 Mhz bandwidth for your :
 - Wifi Access Points and
 - Your video camera's
- And still get the best price/quality choice on the market .



Make sure your active equipment is fit to the job ...



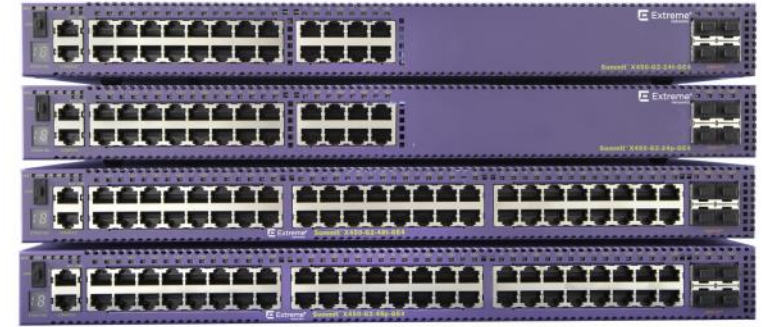
Highlights

Performance

- 48-port or 24-port Gigabit Ethernet models
- 4 ports of SFP+ 10GbE/1GbE or 4 ports of SFP 1GbE on front faceplate
- All configurations Non-blocking full duplex
- Copper and PoE-Plus models
- Built-in 21Gbps stacking ports on rear panel for all models (SummitStack-V84)
- Optional SummitStack-V 40 Gbps stacking across two 10Gb front-panel ports

Features

- Secure Network Access through Rolebased policy or Identity Management
- Front-to-Back airflow
- Modular PoE power supplies
- 850W of PoE-Plus budget with 1 PSU
- 1440W of PoE-Plus Budget with 2 PSUs
- Y.1731 OAM Measurements in hardware for accuracy
- Energy Efficient Ethernet - IEEE 802.3az
- Hot-swappable fan tray and PoE power supplies



ExtremeSwitching™ X450-G2

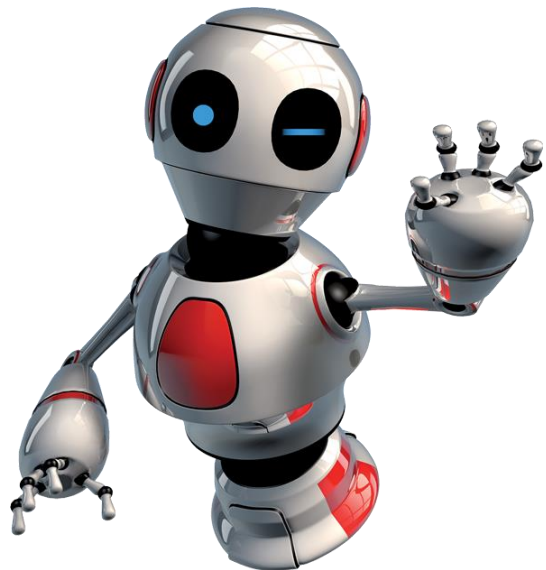
Scalable advanced aggregation switch with ExtremeXOS® modular operating system.

The ExtremeSwitching X450-G2 series is based on Extreme Networks revolutionary ExtremeXOS, a highly resilient OS that provides continuous uptime, manageability and operational efficiency. Each switch offers the same high-performance, nonblocking hardware technology, in the Extreme Networks tradition of simplifying network deployments through the use of common hardware and software throughout the network.

The X450-G2 switches are effective campus edge switches with IEEE 802.3at PoEplus. The X450-G2 series is also an option for DSLAM or CMTS aggregation, or for active Ethernet access.

Make sure your wifi is fit for the job ...

And ready to grow with you and your use of future technologies (RTL services)



Budget WiFi 6 AP from Extreme



AP 305 C



AP 305 CX

c) Wi-Fi 6

for **dummies**
A Wiley Brand

Investeer enkel in
future proof
technologiën

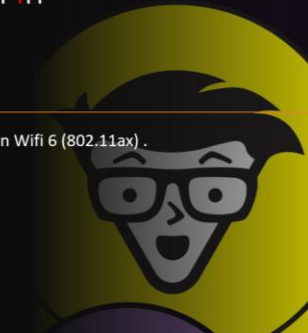
[Get your free copy here.](#)

Kies voor de vele voordelen van Wifi 6 (802.11ax).

Enhanced 2.4 and
5 GHz spectral efficiency

Uplink and downlink
multi-user connectivity

Extended battery life for
client and IoT devices

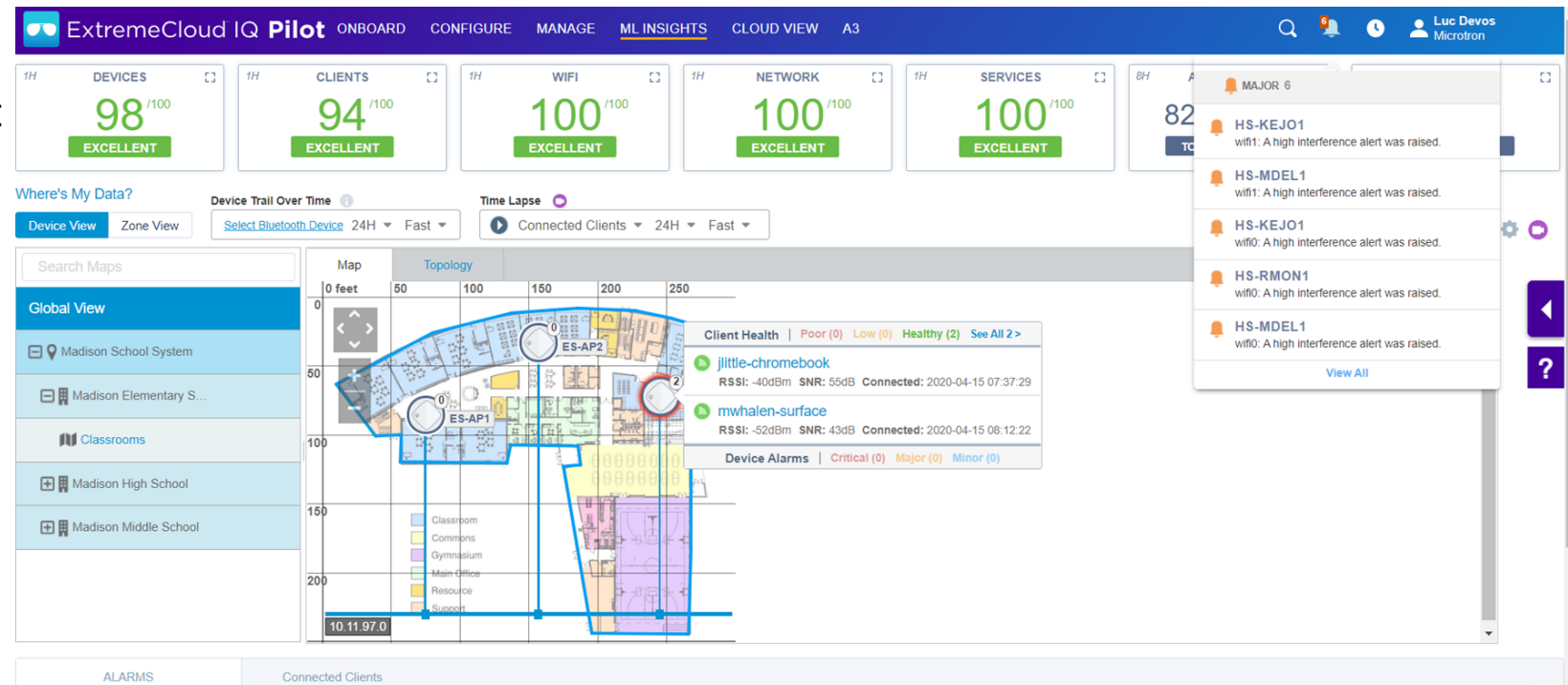
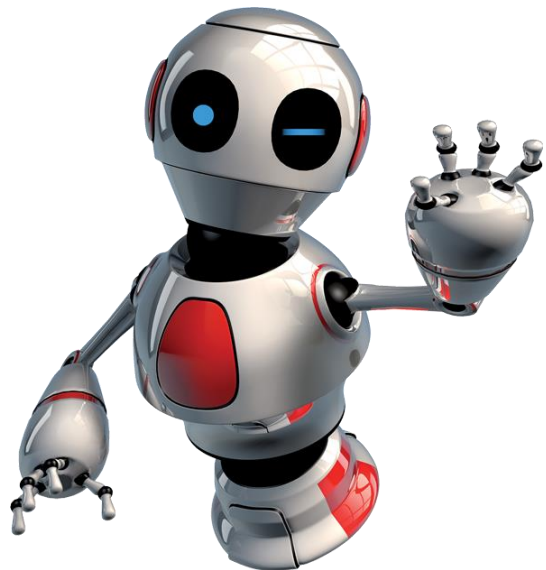


From a Single Pane of Glass :

Feature set : Free device management for acces points, switches and routers

Free unique features :

- device onboarding
- guided configuration
- centralised management
- wifi planner
- basic monitoring tools
- essential security

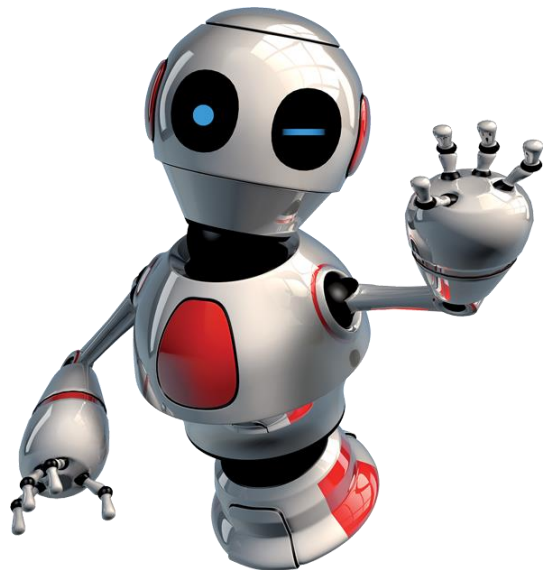


From a Single Pane of Glass :

Feature set : Free device management for acces points, switches and routers

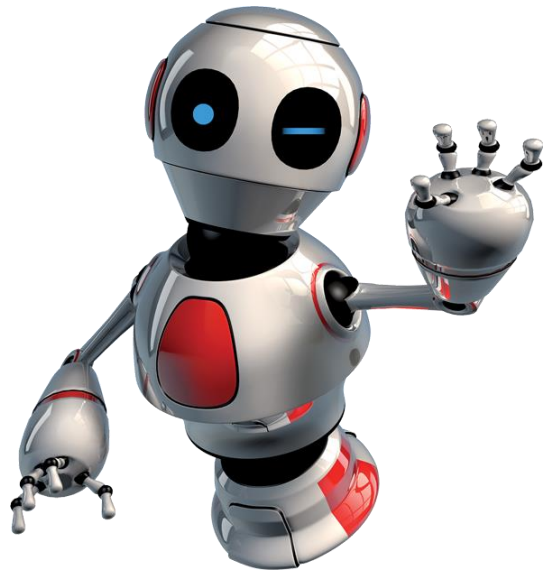
Free unique features :

- device onboarding
- guided configuration
- centralised management
- wifi planner
- basic monitoring tools
- essential security



Services :

- Security & networking audit
- Design
- Planning
- Configuration
- Support



Atlance, uw partner in ICT-lease

Atlance is een snel groeiende financiële dienstverlener gespecialiseerd in het aanbieden van leaseoplossingen voor ICT en digital devices. Wij doen dat sinds 2001 in België, Frankrijk en Luxemburg. Atlance is met meer dan 100 partners, 15.000 contracten en 80 miljoen euro in beheer een solide speler in de markt.

Atlance biedt haar dienstverlening uitsluitend aan via het Atlance partnerkanaal. Dat maakt het mogelijk om maatwerk oplossingen te bieden. Die oplossingen sluiten aan bij de manier van werken van onze partners.

Atlance begeleidt en ondersteunt haar partners en hun klanten actief gedurende het hele

