



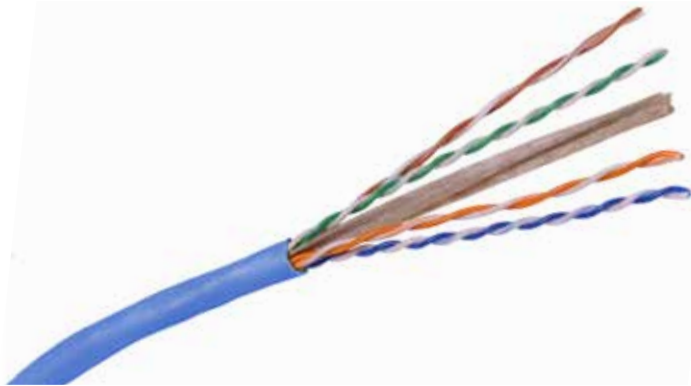
HUBBELL
SPEEDCHANNEL Category 6 U/UTP Cable

Euroclass B2_{ca}-S1a-d2-a1

Sweep Tested from 1-350MHz

Flexible Cable Construction for Ease of Installation

RoHS Compliant, Flame-Retardant Cable Design



FEATURES

- Category 6 and Class E component compliant
- Unique design to suppress alien crosstalk
- Designed for standard bend radius termination
- Standard round cable design
- Rip cord provided for easy cable preparation

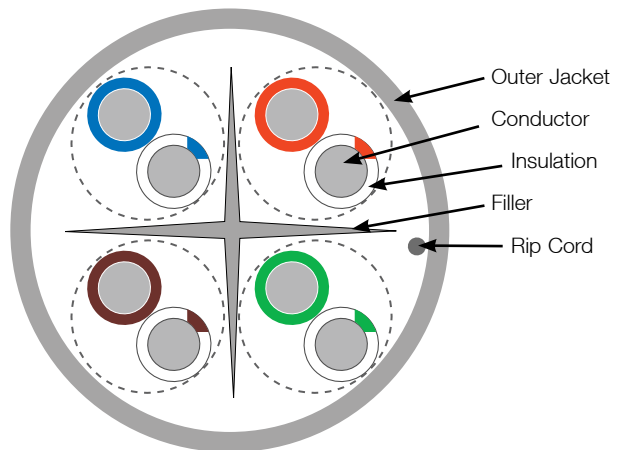
Hubbell SPEEDCHANNEL Category 6 premium cable provides considerable margin above all electrical transmission performance requirements specified in ANSI/TIA-568-C.2 and ISO/IEC 11801 (2nd Edition) standards.

Hubbell Premise Wiring high-performance connectivity (jacks, panels, cords, blocks) was designed to mate with SPEEDCHANNEL Category 6 premium cable creating a cabling system that provides optimum electrical performance capabilities of handling critical, high-bandwidth applications.

SPECIFICATIONS

- Conductor: 24AWG Solid Bare Copper
- Insulation LSZH: PE
- Jacket: LSZH (Euroclass B2_{ca}-S1a-d2-a1)
- Pairing:
 - 1: Blue + Blue/White
 - 2: Orange + Orange/White
 - 3: Green + Green/White
 - 4: Brown + Brown/White
- NVP: 65%
- Rip Cord: Inside Cable Jacket
- Rated operating temp: 75°C (max)
- Packaging: 305m reel in a box

CABLE FEATURES



STANDARDS

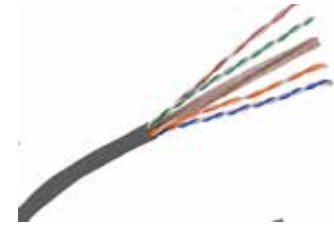
- ANSI/TIA-568-C.2 (Category 6)
- ISO/IEC 11801 Ed 2 (Class E)
- UL 444
- IEC 60332-1 (LSZH)
- IEC 60332-3-25 Category D (LSZHFR)
- EN 50575
- IEC 61156-5

APPLICATIONS

- Ethernet 10/100/1000/10GBASE-T (IEEE 802.3an)
- Data center, LAN and storage area cabling infrastructure
- Power over Ethernet (PoE) applications (IEEE 802.3af, 802.3at, 802.3bt)
- Commercial, medical, government and education facilities
- Bandwidth intensive processing:
 - 3D modeling
 - Broadband video
 - Online document publishing

SPEEDCHANNEL Category 6 Cable, 4-Pair (Reel in a Box)

Color	Catalog No.
Blue	C6SCBZFRB22B
Gray	C6SCBZFRB22GY
Orange	C6SCBZFRB22OR
Violet	C6SCBZFRB22V
White	C6SCBZFRB22W



ELECTRICAL CHARACTERISTICS

Frequency (MHz)	RL (dB)	ATT (dB/100m)	NEXT (dB)	PS NEXT (dB)	ELFEXT (dB/100m)	PS ELFEXT (dB/100m)	PD (ns/100m)	Upper Characteristic Impedance Zu(Ω)	Lower Characteristic Impedance Zl(Ω)
1	20.0	2.0	74.3	72.3	67.8	64.8	570.0	–	–
4	23.0	3.8	65.3	63.3	55.8	52.8	552.0	115.2	86.8
8	24.5	5.3	60.8	58.8	49.7	46.7	546.7	112.6	88.8
10	25.0	6.0	59.3	57.3	47.8	44.8	545.4	111.9	89.4
16	25.0	7.6	56.2	54.2	43.7	40.7	543.0	111.9	89.4
20	25.0	8.5	54.8	52.8	41.8	38.8	542.0	111.9	89.4
25	24.3	9.5	53.3	51.3	39.8	36.8	541.0	112.9	88.5
31.25	23.6	10.7	51.9	49.9	37.9	34.9	540.0	114.1	87.7
62.5	21.5	15.4	47.4	45.4	31.9	28.9	538.6	118.3	84.5
100	20.1	19.8	44.3	42.3	27.8	24.8	537.6	121.9	82.0
200	18.0	29.0	39.8	37.8	21.8	18.8	536.5	128.8	77.6
250	17.3	32.8	38.3	36.3	19.8	16.8	536.3	131.5	76.0

*Cables that meet the requirements of the characteristic impedance are not required to be measured for return loss; alternately, cables that meet the return loss requirements are not required to be measured for characteristic impedance.

SYSTEM PRODUCTS

Jacks, Category 6

Catalog No.	HXJ6xx
-------------	---------------

xx = Standard Color

B = Blue

BK = Black

GY = Gray

GN = Green

OW = Office White

R = Red

W = White

Y = Yellow



Patch Panels, Category 6

Ports	Height	Standard Catalog No.	Angled Catalog No.
24	1.75"	HP624*	HP624A
48	3.50"	HP648*	HP648A

*Color is Black; add **W** to Catalog Number for White. Standard format only.



Patch Cords, Category 6

Description	Catalog No.
NEXTSPEED®, clear boot	HC6xxyy
SPEEDCHANNEL®, colored boot	SC6Exxyy

xx = Standard Color

yy = Standard Length

B = Blue

01 = 1'

BK = Black

03 = 3'

GY = Gray

05 = 5'

GN = Green

07 = 7'

OR = Orange

10 = 10'

P = Purple

15 = 15'

R = Red

20 = 20'

W = White

25 = 25'

Y = Yellow



NEXTSPEED® Field Termination Plugs

Description	Catalog No.
Category 6A	SP6A
Category 6	SP6



Microtron®

Flexible electronic solutions