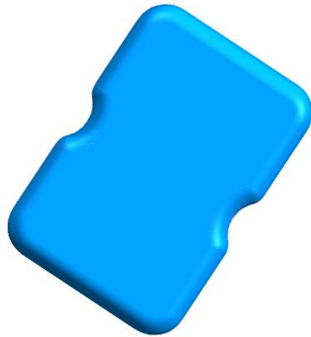


Data Sheet



Keg Tag (Beerkeg)

Global frequency / ETSI / FCC

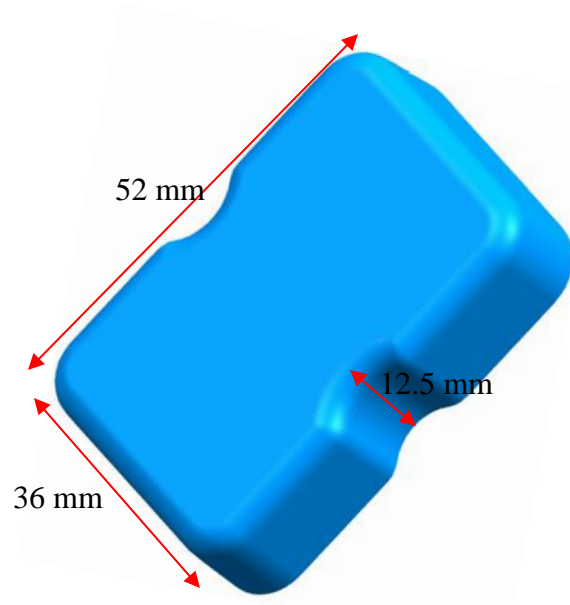
FEATURES

- Keg tag operates effectively with read range over 12m when attached to metal.
- Global, ETSI and FCC frequency
- Rugged construction for high durability.
- Can also be provided with strong Adhesive tape for easy and durable attachment.

APPLICATIONS

- Due to high read range, Keg tag can be effectively used in metal kegs tracking, asset tracking, Containers and Railway Coaches identification.
- Truckload full with (Beer-) kegs can be read through RFID gate at 25km/ph

Chip Type:	UHF Class 1 Gen 2, Alien Higgs 4	
	EPC	128 bit
	User Memory	128 bit
	Data retention	of 50 years
	Write endurance	100,000 cycles
Mechanical:	Dimension	52 x 36 x 12.5mm
	Material	ABS
	Colour	Blue
	Weight	25 g
Electrical:	Operating Frequency	Global, Europe ETSI 866-868 MHz and USA FCC 902-928 MHz
	Operating mode	Passive (battery-less transponder)
Ingress Protection:	IP68	
Thermal:	Storage Temp.	-40°C upto 100°C
	Operating Temp.	-40°C to 85°C
Part Number:	31BY1	
Options:	Available with:	
	Other IC type on request	
	Other colors on request	
	Adhesive backing for easy mounting	



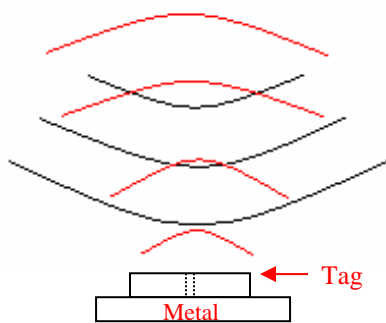
Tag Placement

- Place the tag in such a way that most of its bottom area comes in direct contact with metal.
- Ensure that there is no hindrance between the tag and the reader antenna.
- Reader antenna should be perpendicular to the axis of tag as shown in below figure:

Correct way



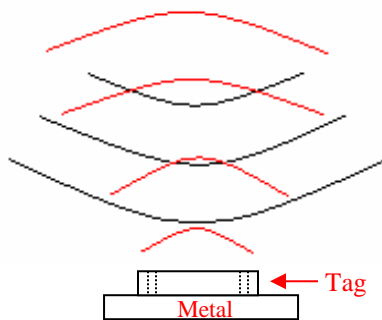
Antenna



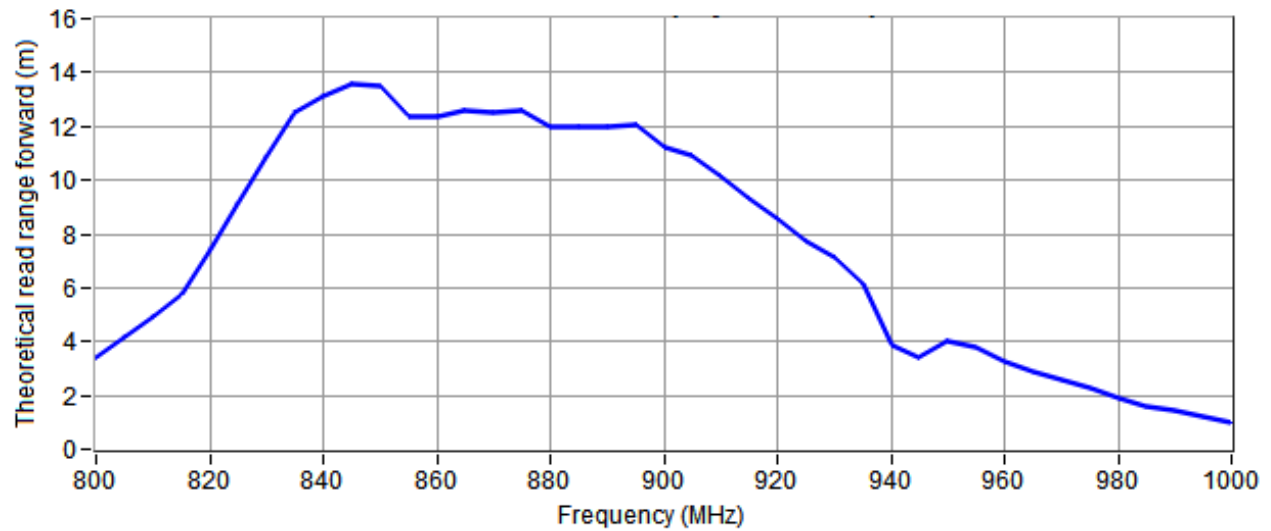
Wrong way



Antenna



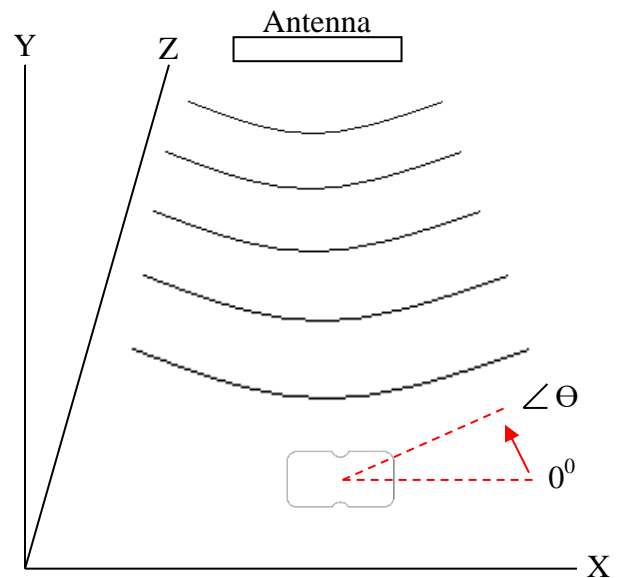
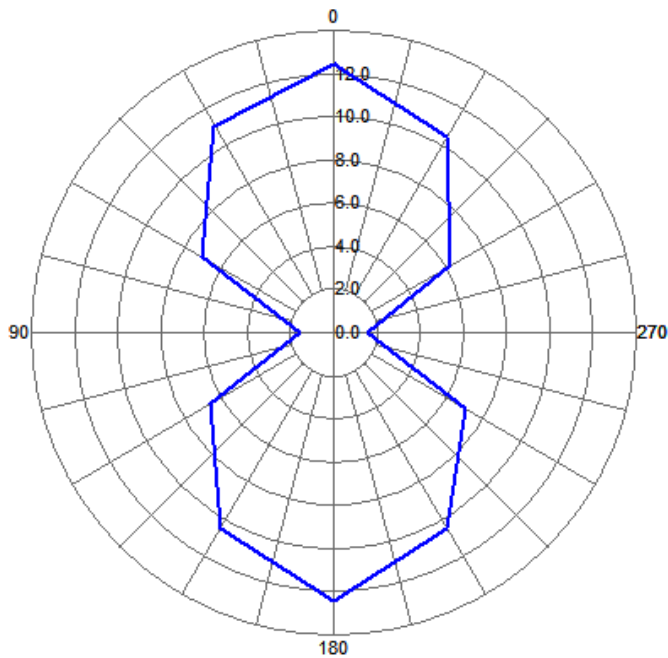
Frequency v/s Read Range Graph



Angular Sensitivity

Keg Tag Angular Sensitivity

(Relative Read Range vs. Orientation)



Tag is rotated in the X-Y plane about the z axis

Microtron®

Flexible electronic solutions